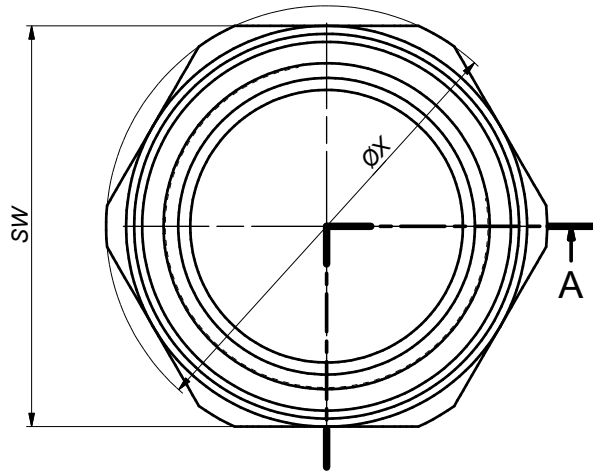


A METRIC ISO METRİK ISO 965-3 (6H)	Major Diameter Dış Üstü Çapı min. - max.	A1 METRIC ISO METRİK ISO 965-3 (6H)	Major Diameter Dış Üstü Çapı min. - max.	D	H	TL	TL1	L	C	SW	X	VOLUME HACİM (mm ³)
M16x1.5	14,376 - 14,676	M16x1.5	14,376 - 14,676	13,5	33,0	15,0	15,0	12,5	19,0	20,0	22,0	4399,889
M20x1.5	18,376 - 18,676	M16x1.5	14,376 - 14,676	13,5	32,0	15,0	15,0	12,0	24,0	25,0	27,5	8205,612
M20x1.5	18,376 - 18,676	M20x1.5	18,376 - 18,676	17,0	32,0	15,0	15,0	12,0	24,0	25,0	27,5	6551,032
M25x1.5	23,376 - 23,676	M20x1.5	18,376 - 18,676	17,0	33,0	15,0	15,0	11,5	31,0	32,0	35,0	14631,140
M25x1.5	23,376 - 23,676	M25x1.5	23,376 - 23,676	22,0	33,0	15,0	15,0	11,5	31,0	32,0	35,0	11863,428
M32x1.5	30,376 - 30,676	M20x1.5	18,376 - 18,676	17,0	36,0	15,0	15,0	13,0	35,0	36,0	39,5	18759,136
M32x1.5	30,376 - 30,676	M25x1.5	23,376 - 23,676	22,0	34,0	15,0	15,0	12,0	35,0	36,0	39,5	14689,163
M32x1.5	30,376 - 30,676	M32x1.5	30,376 - 30,676	29,0	32,0	15,0	15,0	11,0	35,0	36,0	39,5	8894,043
M40x1.5	38,376 - 38,676	M20x1.5	18,376 - 18,676	17,0	41,0	18,0	15,0	15,5	44,0	45,0	50,0	35058,304
M40x1.5	38,376 - 38,676	M25x1.5	23,376 - 23,676	22,0	40,0	18,0	15,0	15,0	44,0	45,0	50,0	31044,448
M40x1.5	38,376 - 38,676	M32x1.5	30,376 - 30,676	29,0	37,0	18,0	15,0	13,5	44,0	45,0	50,0	23093,677
M40x1.5	38,376 - 38,676	M40x1.5	38,376 - 38,676	37,0	38,0	18,0	18,0	14,0	44,0	45,0	50,0	15739,168
M50x1.5	48,376 - 48,676	M20x1.5	18,376 - 18,676	17,0	45,0	18,0	15,0	16,5	54,0	55,0	61,0	60361,066
M50x1.5	48,376 - 48,676	M25x1.5	23,376 - 23,676	22,0	43,0	18,0	15,0	15,5	54,0	55,0	61,0	53496,935
M50x1.5	48,376 - 48,676	M32x1.5	30,376 - 30,676	29,0	41,0	18,0	15,0	14,5	54,0	55,0	61,0	44815,797
M50x1.5	48,376 - 48,676	M40x1.5	38,376 - 38,676	37,0	40,0	18,0	18,0	14,0	54,0	55,0	61,0	35358,546
M50x1.5	48,376 - 48,676	M50x1.5	48,376 - 48,676	47,0	38,0	18,0	18,0	13,0	54,0	55,0	61,0	20497,107
M60x1.5	58,379 - 58,676	M20x1.5	18,376 - 18,676	16,0	47,0	18,0	15,0	17,5	67,0	68,0	75,0	103084,755
M60x1.5	58,379 - 58,676	M25x1.5	23,376 - 23,676	21,0	46,0	18,0	15,0	17,0	67,0	68,0	75,0	97059,412
M60x1.5	58,379 - 58,676	M32x1.5	30,376 - 30,676	27,0	45,0	18,0	15,0	16,5	67,0	68,0	75,0	88120,709
M60x1.5	58,379 - 58,676	M40x1.5	38,376 - 38,676	36,0	45,0	18,0	18,0	16,5	67,0	68,0	75,0	80082,032
M60x1.5	58,379 - 58,676	M50x1.5	48,376 - 48,676	47,0	41,0	18,0	18,0	14,5	67,0	68,0	75,0	57655,272
M63x1.5	61,376 - 61,676	M50x1.5	48,376 - 48,676	47,0	41,0	18,0	18,0	14,5	67,0	68,0	75,0	51616,966
M63x1.5	61,376 - 61,676	M63x1.5	61,376 - 61,676	60,0	38,0	18,0	18,0	13,0	67,0	68,0	75,0	26267,125
M75x1.5	73,376 - 73,676	M63x1.5	61,376 - 61,676	60,0	41,0	18,0	18,0	13,5	79,0	80,0	88,5	62117,251
M75x1.5	73,376 - 73,676	M75x1.5	73,376 - 73,676	72,0	38,0	18,0	18,0	12,0	79,0	80,0	88,5	33117,092
M90x1.5	88,376 - 88,676	M75x1.5	73,376 - 73,676	72,0	45,0	21,0	18,0	15,5	94,0	95,0	105,0	88034,557
M90x1.5	88,376 - 88,676	M90x1.5	88,376 - 88,676	87,0	44,0	21,0	21,0	15,0	94,0	95,0	105,0	45546,828
M110x1.5	108,376 - 108,677	M110x1.5	108,376 - 108,677	107,0	44,0	21,0	21,0	14,5	119,0	120,0	133,5	100418,478

* METRİK DİŞ ÖLÇÜLERİ ISO 965-3 / METRIC THREAD SIZES ACC.TO ISO 965-3

* ANAHTAR AĞZI ÖLÇÜLERİ DIN 475 / HEXAGONAL SIZES ACC.TO DIN 475

Revision History / Revizyon Tarihi					
No Nu.	Date Tarih	Request No Talep Nu.	Revision Revizyon	Realised by Gerçekleştirilen	Approved By Onaylayan
4	11.02.2021	3577	M32x1.5/M20x1.5 size has been added into the table. M32x1.5/M20x1.5 ebadı tabloya eklendi. M40x1.5/M20x1.5 size has been added into the table. M40x1.5/M20x1.5 ebadı tabloya eklendi. M40x1.5/M25x1.5 size has been added into the table. M40x1.5/M25x1.5 ebadı tabloya eklendi. M50x1.5/M20x1.5 size has been added into the table. M50x1.5/M20x1.5 ebadı tabloya eklendi. M50x1.5/M25x1.5 size has been added into the table. M50x1.5/M25x1.5 ebadı tabloya eklendi. M50x1.5/M32x1.5 size has been added into the table. M50x1.5/M32x1.5 ebadı tabloya eklendi. M60x1.5/M20x1.5 size has been added into the table. M60x1.5/M20x1.5 ebadı tabloya eklendi. M60x1.5/M25x1.5 size has been added into the table. M60x1.5/M25x1.5 ebadı tabloya eklendi. M60x1.5/M32x1.5 size has been added into the table. M60x1.5/M32x1.5 ebadı tabloya eklendi. M60x1.5/M40x1.5 size has been added into the table. M60x1.5/M40x1.5 ebadı tabloya eklendi. M60x1.5/M50x1.5 size has been added into the table. M60x1.5/M50x1.5 ebadı tabloya eklendi.	K.SERT	N.ORAL AVCI



* Sharp edges must be processed with 0.5x45° chamfer.
Keskin köşeler 0.5x45° pah kırılacaktır.

Drawing Number / Resim No	3673	Reference Number / Ref. No	CA3 - RMM	Date /Tarih	26.03.2012
1st Discl.Request #/Y.Yn.Tal.No	-	Designed by / Tasarlayan	Nursel ORAL	Undefined Tolerances acc.to/ Belirtilmeyen Toleranslar (DIN 7168-f)	
Bimed Code / Bimed Kodu	-	Approved by / Onaylayan	Yılmaz ALBUKREK		
A/A1 (METRIC/METRIC) Ex-e II-Ex-d IIC COUPLING DIMENSION TABLE B-RM			Material / Malzeme		
A/A1 METRİK/METRİK Ex-e II-Ex-d IIC COUPLING ÖLÇÜ TABLOSU B-RM			MS 58 - (316-316L) (Brass/Nickel Plated) - (Galvanizli Çelik) - (Stainless)		
Volume/Hacim		Mass / Ağırlık	Nominal size ranges Anma ölçü aralıkları		
-		-	0.5...≤3		
			6<...≤30		
			30<...≤120		
			120<...≤400		
			Value Değer		
			±0,05		
			±0,05		
			±0,10		
			±0,15		
			±0,20		

