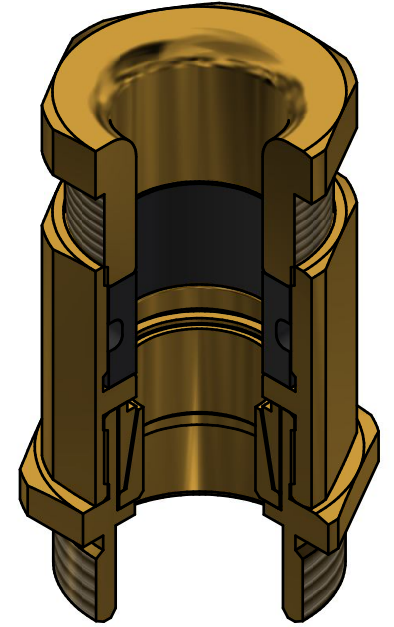


Revision History / Revizyon Tarihiçesi					
No Nu.	Date Tarih	Request No Talep Nu.	Revision Revizyon	Realised By Gerçekleştiren	Approved By Onaylayan
1	11.04.2019	2134	Anahtar ağız ölçüsü SW25'den SW28'e değiştirildi.	M.KOCAOĞLU	N.ORAL



**TOTAL CABLE CLAMPING RANGE** min.Ø8.0mm - max.Ø15.0mm  
**ARMOUR THICKNESS RANGE** : min.Ø0.3mm - max.Ø1.3mm

No/Nu	Qty/Ad	Part Name/Parça Adı	Material/Malzeme
6	1	M20x1.5 Ex-d TAURUS CAP (6-11)	Brass, Brass(Nickel Plated), Stainless Steel
5	1	M20x1.5 Ex-d TAURUS UPPER SEAL (6-11)	CR,VMQ (Silicone)
4	1	M20x1.5 INDUSTRIAL GLAND UPPER BODY (8-15)	Brass, Brass(Nickel Plated), Stainless Steel
3	1	M20x1.5 INDUSTRIAL GLAND RING (8-15)	Brass, Brass(Nickel Plated), Stainless Steel
2	1	M20x1.5 INDUSTRIAL GLAND GROUNDING CONE (8-15)	Brass, Brass(Nickel Plated), Stainless Steel
1	1	M25x1.5 INDUSTRIAL GLAND LOWER BODY (8-15)	Brass, Brass(Nickel Plated), Stainless Steel
Part List / Parça Listesi			

Drawing Number / Resim No	5495	Reference Number / Ref. No	-	Date / Tarih	
1st Discl.Request #/Y.Yn.Tal.No	16-402	Designed by / Tasarlayan	Mustafa KOCAOĞLU	07.06.2016	
Bimed Code / Bimed Kodu	KBET2SM	Approved by / Onaylayan	Nursel ORAL	07.06.2016	
M25x1.5 INDUSTRIAL CABLE GLAND (8-15)			Material / Malzeme		
M25x1.5 ENDÜSTRİYEL RAKOR (8-15)			-		
bimed			Volume/Hacim	Mass / Ağırlık	
			N/A		
Undefined Tolerances acc.to/ Belirtilmeyen Toleranslar (DIN 7168-f)					Value Deger
Nominal size ranges Anma ölçü aralıkları					Value Deger
0.5<...≤3					±0,05
3<...≤6					±0,05
6<...≤30					±0,10
30<...≤120					±0,15
120<...≤400					±0,20