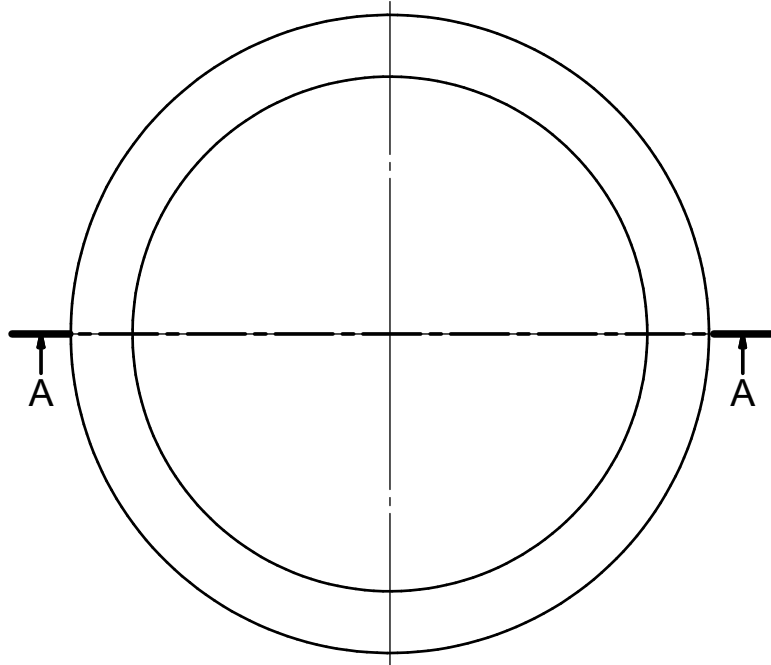


A-A



Revision History / Revizyon Tarihiçesi					
No Nu.	Date Tarih	Request No Talep Nu.	Revision Revizyon	Realised By Gerçekleştiren	Approved By Onaylayan
5	19.12.2022	4493	BMSW-2PA(2MM),BMSW-3PA(2MM),BMSW-4PA(2MM),BMSW-5PA(2MM),BMSW-6PA(2MM),BMSW-7PA(2MM),BMSW-8PA(2MM),BMSW-9PA(2MM),BMSW80PA(2MM) Products with stock code have been added to the table. BMSW-2PA(2MM),BMSW-3PA(2MM),BMSW-4PA(2MM),BMSW-5PA(2MM),BMSW-6PA(2MM),BMSW-7PA(2MM),BMSW-8PA(2MM),BMSW-9PA(2MM),BMSW-80PA(2MM) stok kodlu ürünler tabloya eklenmiştir.	A.YILMAZ	F.BURAK TAN

PA CODE	FIBER CODE	SIZE	ØD (mm)	Ød (mm) +0,1 -0,2	S (mm)
BMSW-1PA	BMSW-1FB	M12	15,5	12,1	1,5
BMSW-2PA	BMSW-2FB	M16	19,6	16,1	1,5
BMSW-2PA(2MM)	-	M16	19,6	16,1	2,0
BMSW-3PA	BMSW-3FB	M20	23,8	20,1	1,5
BMSW-3PA(2MM)	-	M20	23,8	20,1	2,0
BMSW-4PA	BMSW-4FB	M25	32,2	25,1	1,5
BMSW-4PA(2MM)	-	M25	32,2	25,1	2,0
BMSW-5PA	BMSW-5FB	M32	39,8	32,1	1,5
BMSW-5PA(2MM)	-	M32	39,8	32,1	2,0
BMSW-6PA	BMSW-6FB	M40	49,6	40,1	1,5
BMSW-6PA(2MM)	-	M40	49,6	40,1	2,0
BMSW-7PA	BMSW-7FB	M50	62,0	50,2	1,5
BMSW-7PA(2MM)	-	M50	62,0	50,2	2,0
BMSW-60PA	BMSW-60FB	M60	72,0	60,2	1,5
BMSW-8PA	BMSW-8FB	M63	78,4	63,2	1,5
BMSW-8PA(2MM)	-	M63	78,4	63,2	2,0
BMSW-70PA	BMSW-70FB	M70	82,0	70,2	1,5
BMSW-9PA	BMSW-9FB	M75	93,4	75,2	1,5
BMSW-9PA(2MM)	-	M75	93,4	75,2	2,0
BMSW-80PA	BMSW-80FB	M80	98,0	80,2	1,5
BMSW-80PA(2MM)	-	M80	98,0	80,2	2,0
BMSW-85PA	BMSW-85FB	M85	103,0	85,2	1,5
BMSW-10PA	BMSW-10FB	M90	112,0	90,2	1,5
BMSW-11PA	BMSW-11FB	M100	124,5	100,2	1,5
BMSW-12PA	BMSW-12FB	M110	134,0	110,2	2,0
BMSW-13PA	BMSW-13FB	M115	139,0	115,2	2,0
BMSW-14PA	BMSW-14FB	M130	154,0	130,2	2,0

Drawing Number / Resim No	4999	Reference Number / Ref. No	-	Date / Tarih	30.01.2013	
1st Discl.Request #/Y.Yn.Tal.No	-	Designed by / Tasarlayan	Nursel ORAL			
Bimed Code / Bimed Kodu	-	Approved by / Onaylayan	Oğuz ELÇİ			
<b>METRIC WASHER SIZE TABLE</b> <b>METRIK RONDELA ÖLÇÜ TALOSU</b>			Material / Malzeme		Undefined Tolerances acc./ Belirlenmeyen Toleranslar (DIN 7168-f)	
			PA 6 (White/Beyaz)			Nominal size ranges Anma ölçü aralıkları
			ve/veya		0,5<...<=3	±0,05
			Fiber (Fibre)		3<...<=6	±0,05
					6<...<=30	±0,10
					30<...<=120	±0,15
		120<...<=400	±0,20			